

TCM SERIES

Material: Rynite (Black)

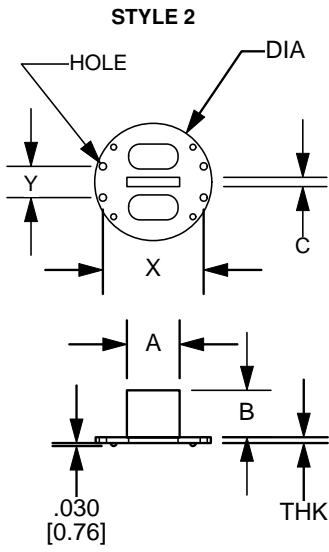
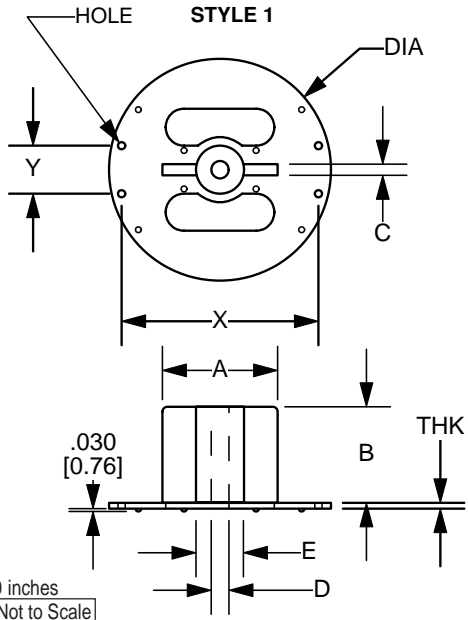
Rating: UL94-VO

4 Terminals: Self leading

Packaging Tray:

TCM100-04	TY122x140A
TCM120-04	TY122x140-A
TCM170-04	None
TCM230-04	None

Application: For horizontal mounting of toroids utilizing the toroids winding leads to terminate to the PCB. The toroid's leads pass through the holes to be soldered to the PCB. The center post is designed for use in common mode applications where winding separation is important.



Part Number	DIA.	A	B	C	D	E	THK	HOLE	X	Y	Style
TCM100-04	1.00 [25.4]	.457 [11.6]	.575 [14.6]	.085 [2.2]	-----	-----	.048 [1.2]	.053 [1.3]	.825 [20.9]	.300 [7.6]	2
TCM120-04	1.21 [30.7]	.554 [14.1]	.490 [12.4]	.093 [2.4]	-----	-----	.062 [1.6]	.064 [1.6]	1.050 [26.7]	.330 [8.4]	2
TCM170-04	1.70 [43.2]	.862 [21.9]	.800 [20.3]	.120 [3.1]	.170 [4.3]	.440 [11.2]	.062 [1.6]	.064 [1.6]	1.40 [35.6]	.500 [12.7]	1
TCM230-04	2.31 [58.7]	1.20 [30.5]	1.00 [25.4]	.120 [3.1]	.170 [4.3]	.500 [12.7]	.062 [1.6]	.064 [1.6]	2.050 [52.1]	.500 [12.7]	1