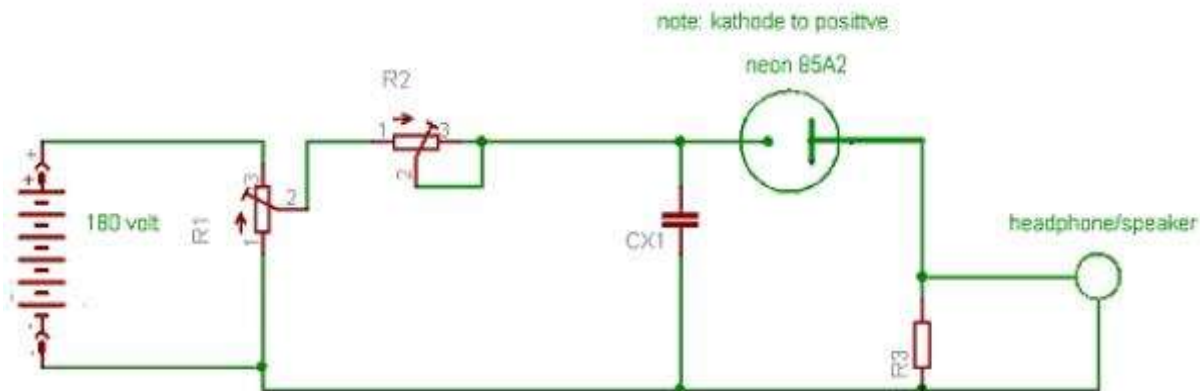


## Moving Mass Detector – Franklin and Maby (research on Dowsing) – related to Louis Rota's work

Here are some simple experiments which show the basic elements of Rota's patents using a simple electronic device. I call this the neon detector.

This circuit will show the fields that surrounds heavy objects in motion. It was originally discovered over 65 years ago by **T.B Franklin** and **J.C. Maby**. They found that they could detect aircraft and trains many kilometers away. At the beginning of WW2 it was investigated by the UK Government as an aircraft detector, but when radar was developed it was abandoned.



- R1 is 1 Megohm.
- R2 is 100 Kohm
- R3 is 100 ohms
- CX1 is 0.02 microfarad

It is operated something like a geiger counter. Some 85A2 are better than others for this detector.

Adjust R2 to maximum ohms and gradually turn R1 from zero until the just neon starts firing as heard in the phones as a clicking noise. Reduce R2 until the clicking becomes irregular and adjust R1 until click rate is about 1 per second. Reduce R2 until just above where the clicks start to appear in groups. If no click occurs reverse polarity of the neon.

Go to an uninhabited area as far away from human habitation as possible. Mount the detector on a tripod and run a car with the engine off down a gentle slope toward the detector. You will notice bursts of click at fixed distances from the car and places where the click rate is reduced between. The car in motion appears as though it were surrounded in zones at fixed distances from it. This can be readily computerized. It seems clear that there is an ambient field which is disturbed by heavy objects in motion and the effect is as though the object were surrounded in spherical ripples of many metres wavelength. Before WW2, J.C. Maby found that aircraft could be detected a great distance away and trains 12 Km away. Remember there was much less motor traffic and aircraft at that time so it was easier to clearly see these effects than today.

It seems that there is an ambient field disturbed by heavy objects, especially paramagnetic objects such as cars. This is essentially what Rota was saying detecting and what the neon is detecting.

There are many unknown effects detected with this device. For example a vertical steel rod has four fan shaped beams radiating from it in N,E,S,W direction.

