

Lead-out or Bring-in Gravitational and Magnetic/Electromagnetic Energy

Lawrence Tseung 6315 9300

Use Lee-Tseung Lead out Energy Theory

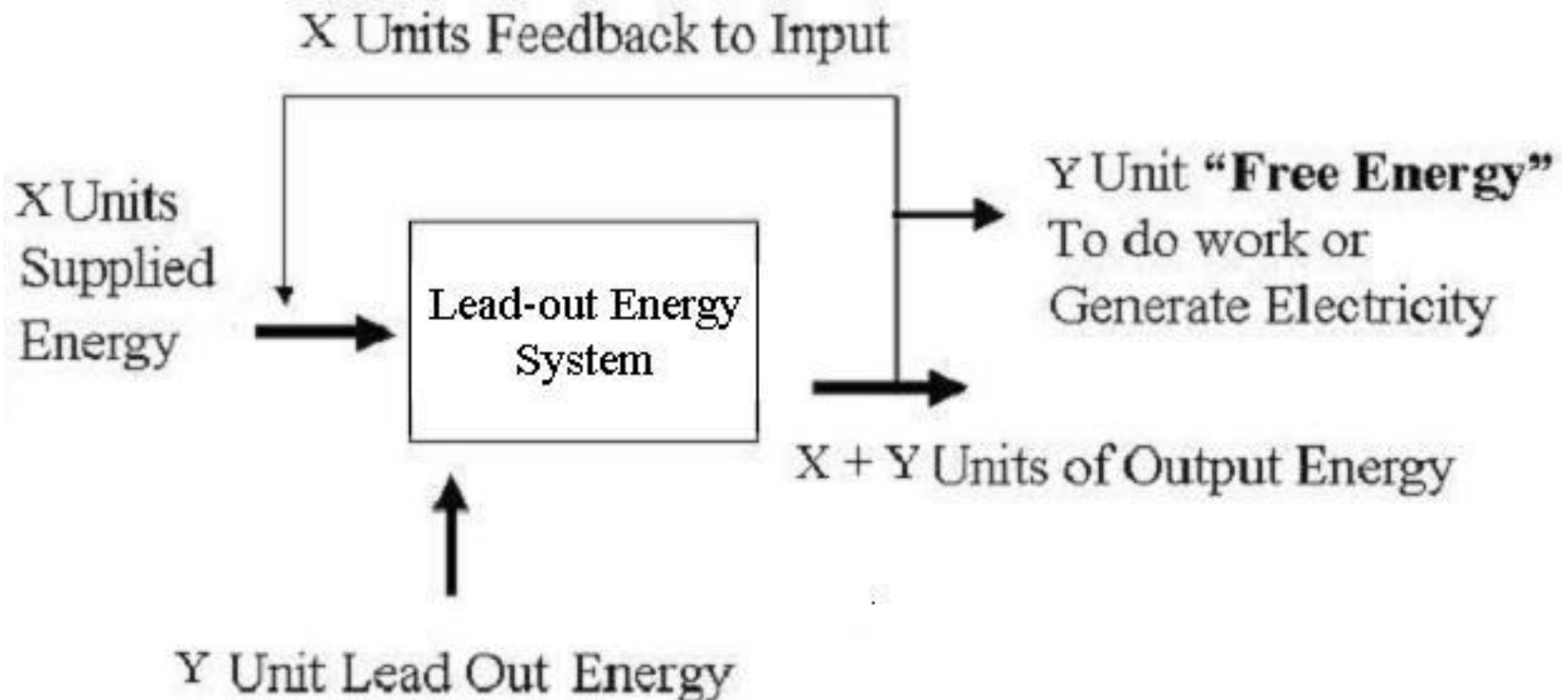
lawrencetseung@yahoo.com

Technical Presentation on Feb 8. 2015

Continued: Overunity.com - search "12 times"

Bring-in Energy from Environment

- **Not Perpetual Motion Machine.**

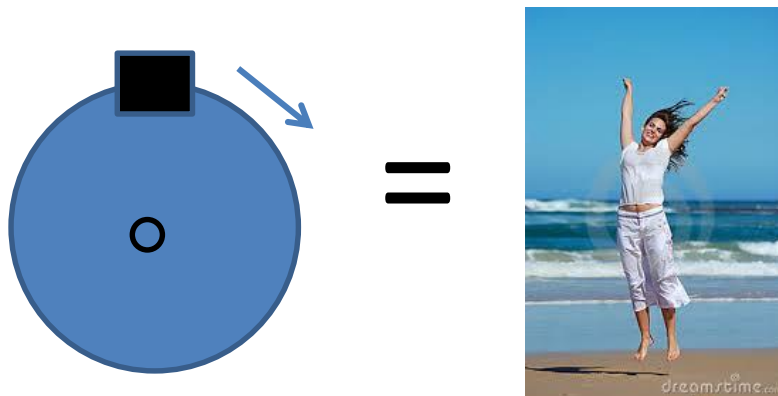


Sound Resonance

- Demonstration using frequency generator and two cups.
- Traditional explanation
 - Louder sound is because of more efficient use of the source energy.
- Lee-Tseung explanation
 - Louder sound is because of using the kinetic energy of air molecules
 - Air exists because of **gravity**.



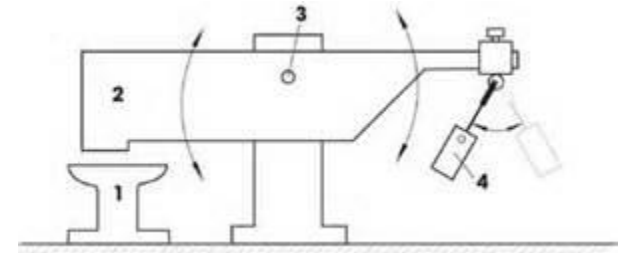
We can lead-out gravitational Energy continuously with a **pulsed pendulum** or a combination of **seesaw and pendulum at resonance**.



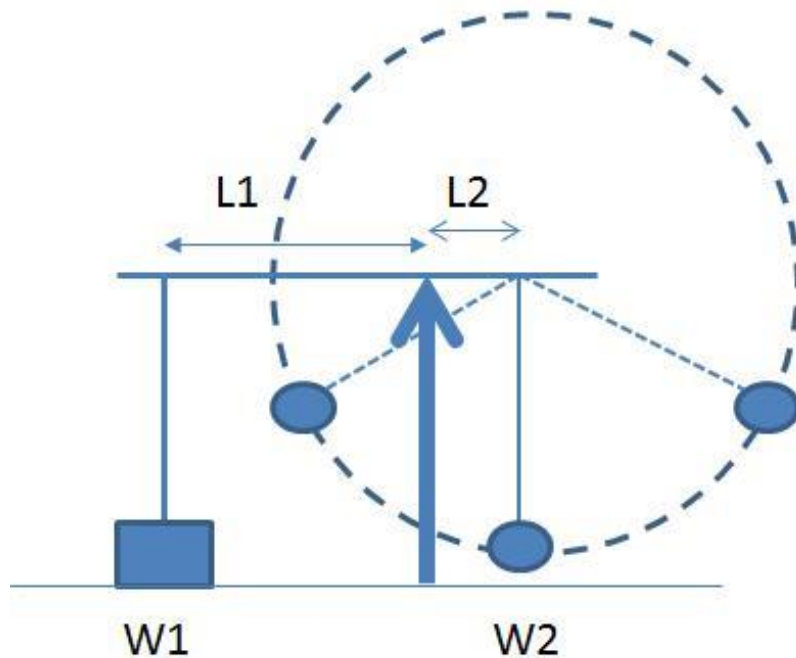
Unbalanced Wheel rotation has Elements of the **Pendulum** and also Elements of **Jumping**. Jumping causes **weight** to move **Up** and **Down** as seen on scale.

The Milkovic 2 stage Pendulum

- From [youtube](#): push from finger movement can lift weight 74 pounds.
 - One push, Weight lifted twice
 - Lifting occurs when Bob at lowest point
 - Swing amplitude will not decrease.
- Where does the energy come from?
- Increased tension on string **leading-out** gravitational energy.

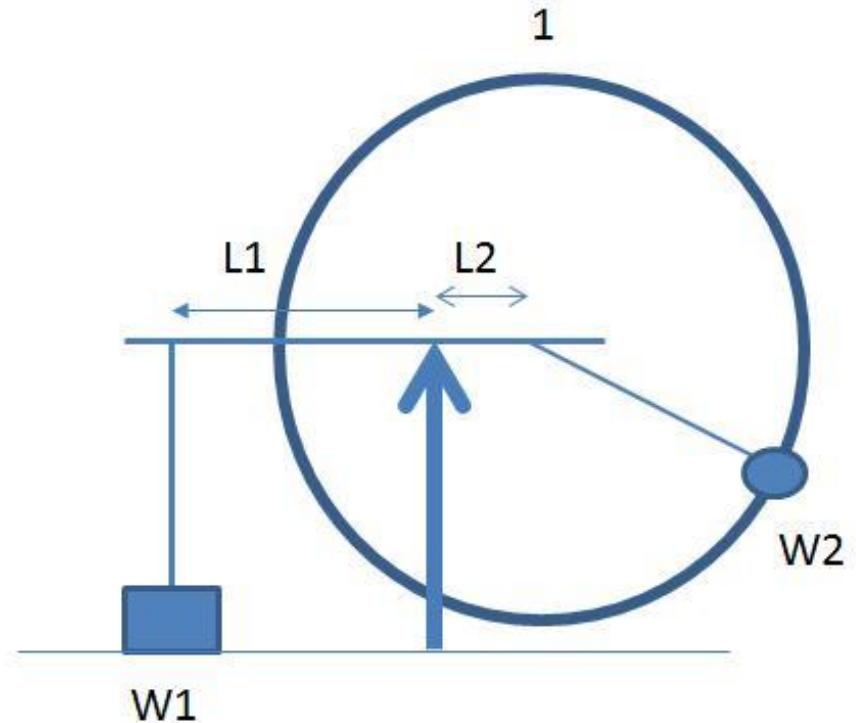


Compare pendulum and unbalanced wheel



Milkovic 2SO simplified

1. $W1 > W2$
2. $L1 > L2$
3. Max. swing angle < 90

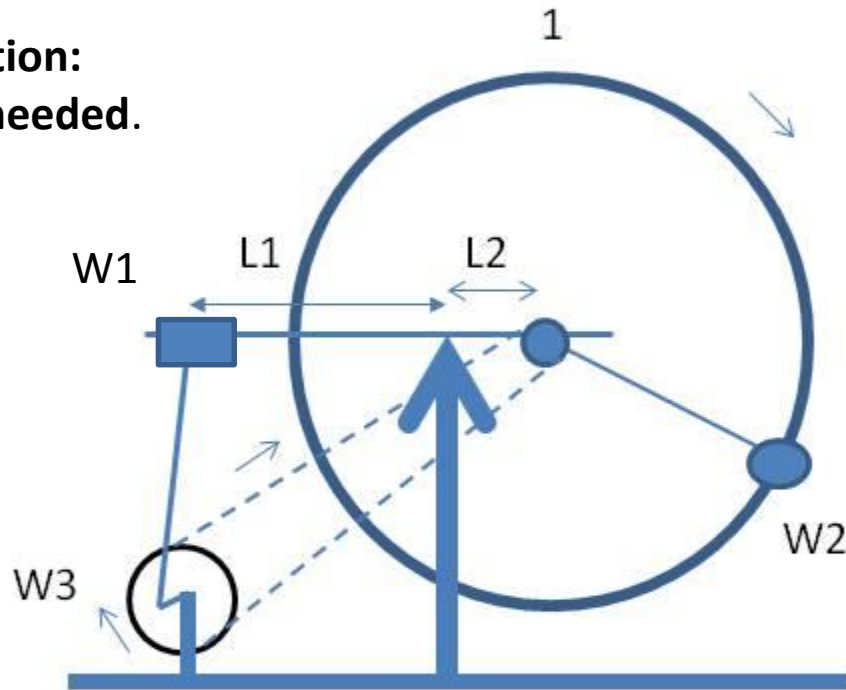


Pendulum replaced by Unbalanced Wheel

1. Max. swing angle can be 180 degrees (Weight at highest vertical position)
2. Best Pulse = horizontal when Weight W2 is at position 1.

The Chan Wheel to act as the Bessler Wheel?

Correction:
W1 is needed.



Notes:

1. Unbalanced wheel provides the centrifugal force to activate the Lever.
2. The Lever turns the crank to rotate W3.
3. Belt provides the feedback mechanism to keep unbalanced wheel rotating.
4. This is an example of the Lead-out or Bring-in Energy Machine.
5. Gravitational energy is brought-in to sustain motion and more.

Milkovic 2SO with Unbalanced Wheel and Crankshaft
+ belt as Feedback Mechanism to become one version
of the **Bessler's Wheel** in 17th Century?

Chan Wheel Inspiration - “Jumping needed to Lead out gravitational Energy”

- Balanced wheel **will not** lead-out gravitational energy!



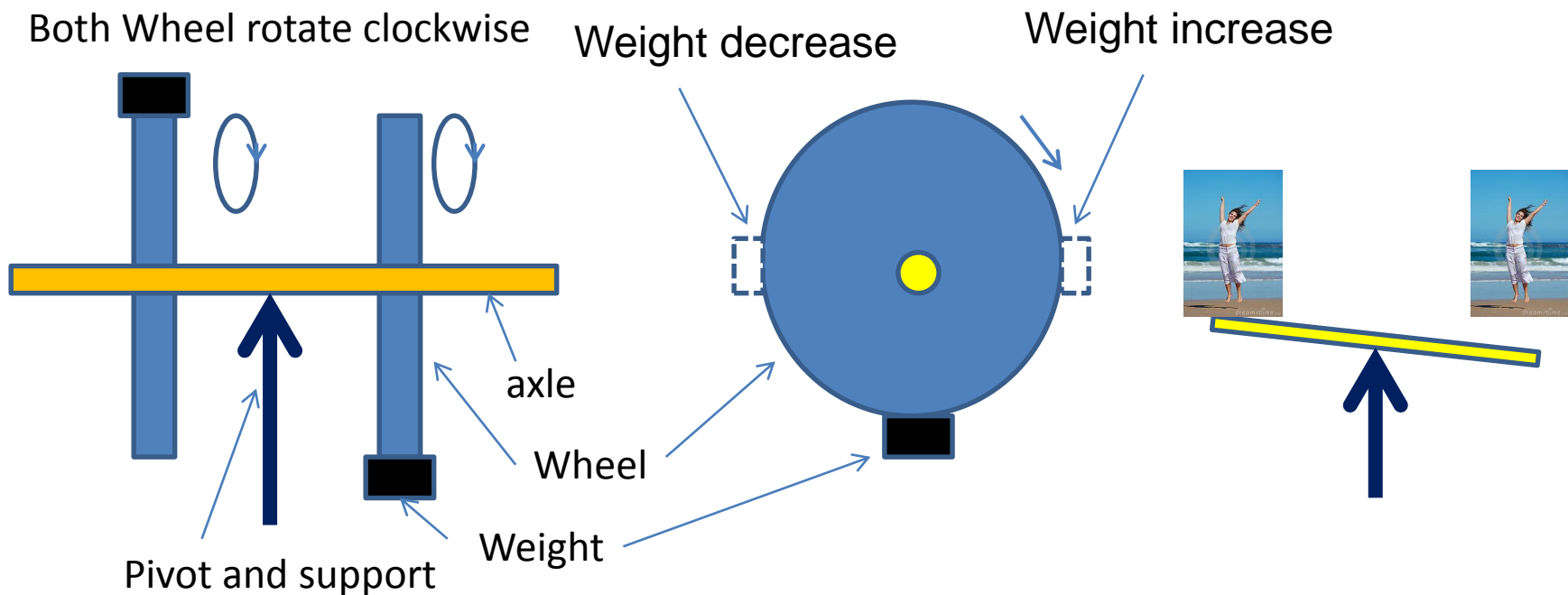
**Balanced wheel would not lift W1
At all rotational speeds – no
Gravitational Energy brought-in!**



Unbalanced Wheel lifted W1
on rotation When Centrifugal force
plus Weighted Wheel produced
higher clockwise moment.

Yuen/Bessler Wheel Secrets?

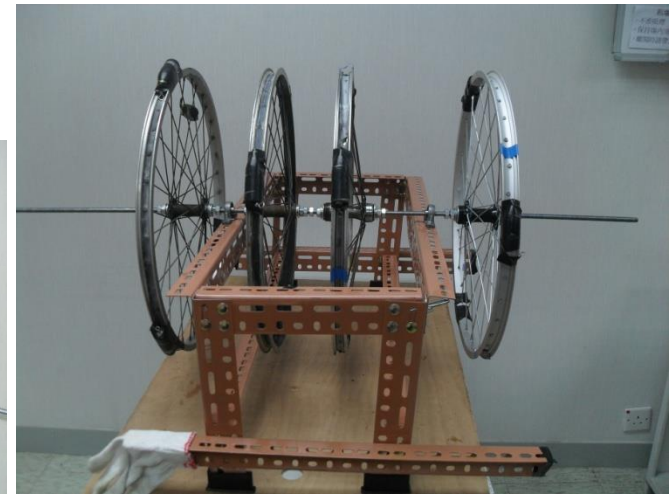
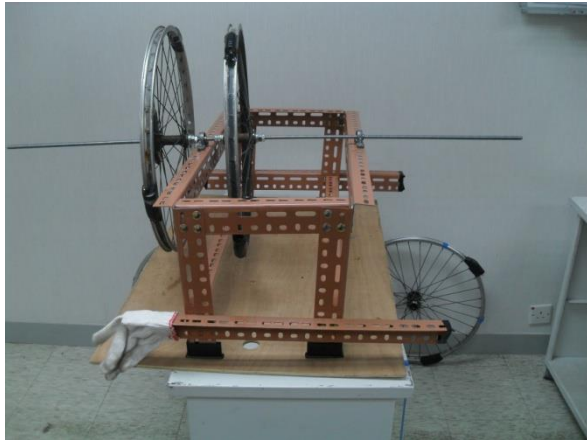
- Yuen Wheel uses two unbalanced wheels.



Each rotating Unbalanced Wheel simulates a person jumping. The action will **increase torque**. If two or more Unbalanced Wheels produce torque in the same direction, the resultant torque will increase and will **help the rotation**. Can the Bessler Wheel be this simple? **Theoretically yes!**

Various Yuen Wheel configurations

- We tried 2, 3, and 4 configurations as shown.



We achieved 150 revolutions on Oct 31 when we used the Chan Wheel Frame. Much more tuning need to be done to get back to that figure or better. Weights need to placed “correctly” to get better performance (resonance).

Yuen Wheel - drawing Inspiration from Peru Energy Multiplier

- **F.M.Chalkalis Energy Multiplier No.2**

- <http://www.youtube.com/watch?v=dPe1zB5JQmU>



Note:

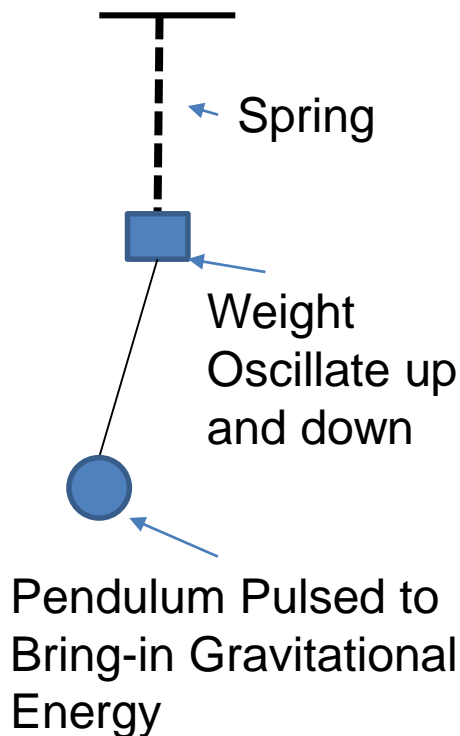
1. Use of a heavy, complicated Unbalanced Wheel.
2. Use a Balanced Flywheel.
3. Rotated for a long time.

The Yuen Wheel uses two simple Unbalanced Wheels. Expect to rotate **Forever**.

With **Lee-Tseung** Lead out energy **theory** to guide development.

Vertical vibrations or oscillations can bring-in gravitational energy

- Spring and pendulum as two stage oscillator



The concept of 2SO can be extended to Spring and Pendulum. The varying centrifugal force of the swinging pendulum will pull the Spring.

If frequencies match (resonance), gravitational energy will be brought-in.

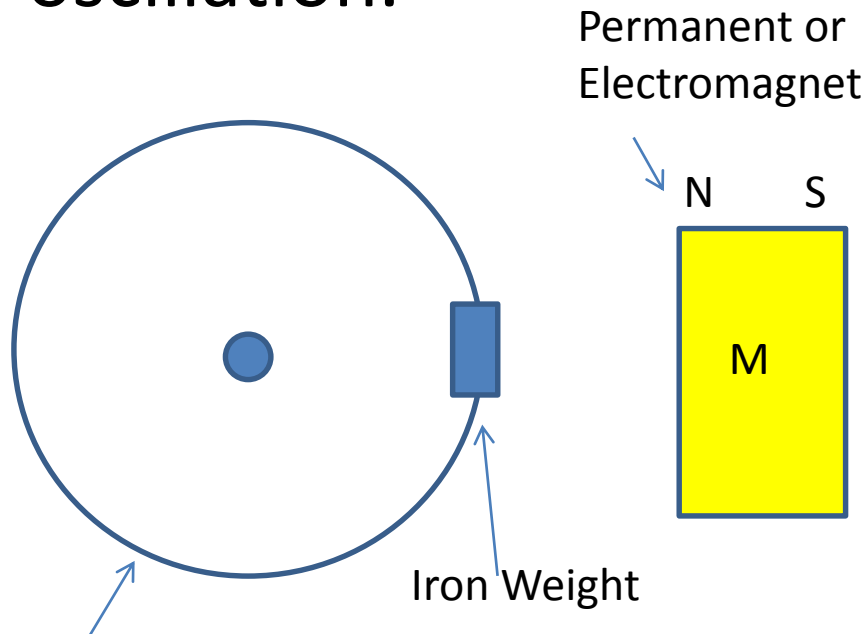
The William Skinner Device

- A gravity powered machine was developed in 1939 by William Skinner.
- It could bring-in gravitational energy via unbalanced wheel rotation at an angle.
 - Four unbalanced wheels were used.
 - Multiply power by 1200%
- It is now being replicated by multiple groups.
- One proven application of Lead-out gravitational energy?

Horizontal magnetic pendulum?

Link to bringing in Magnetic Energy

- Use magnets to produce “pendulum” style oscillation.



Horizontally placed Unbalanced wheel
Achieved by repulsion of two round
magnets with hole in center.

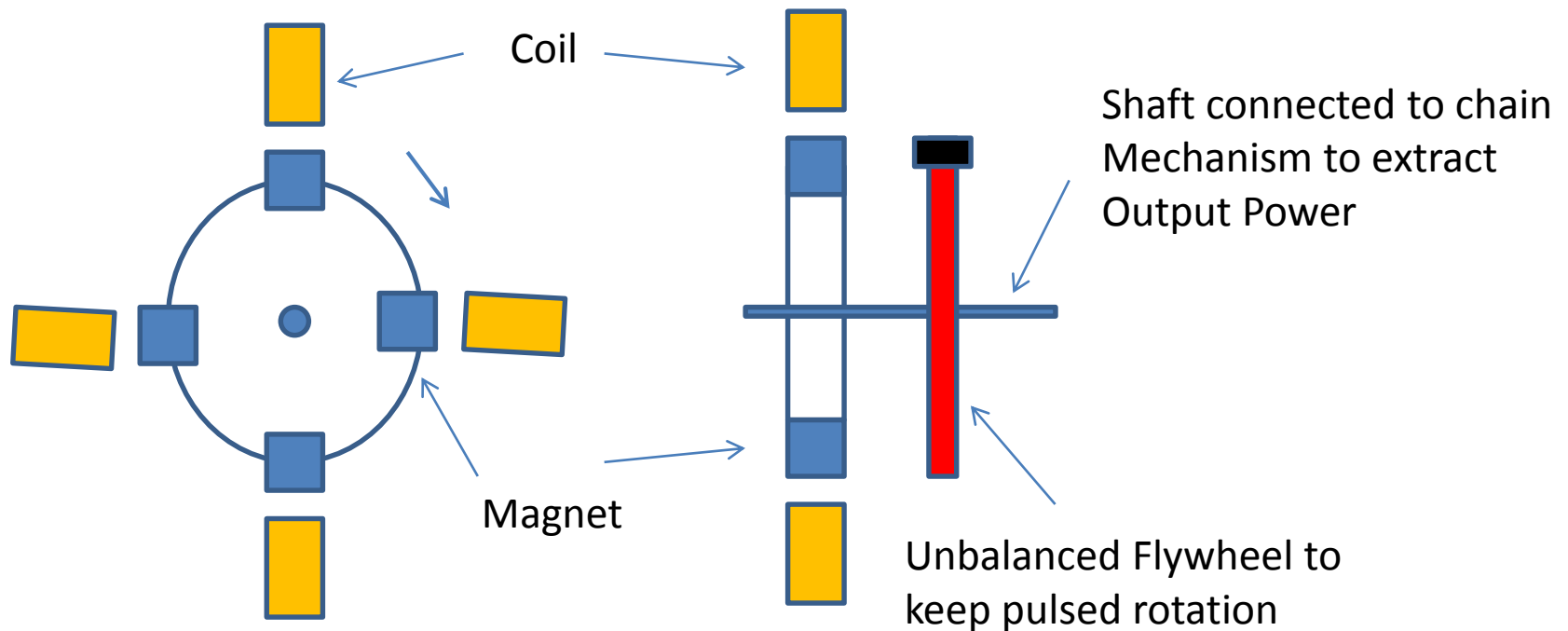
Notes:

1. Small pull or push of Iron Weight. Oscillation?
2. With Electromagnet, can Pulse increase amplitude of Oscillation?
3. What happens when Iron Weight is replaced by magnet?

Leading-out Magnetic Energy

Pulse Motor leading out Gravitational and Electromagnetic Energy

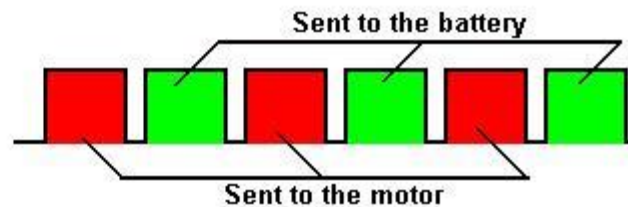
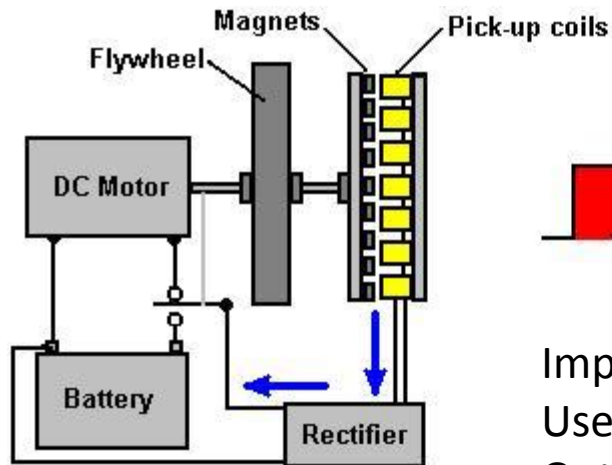
- Pulse Motors with stationary coils and rotating magnets leading out magnetic energy.



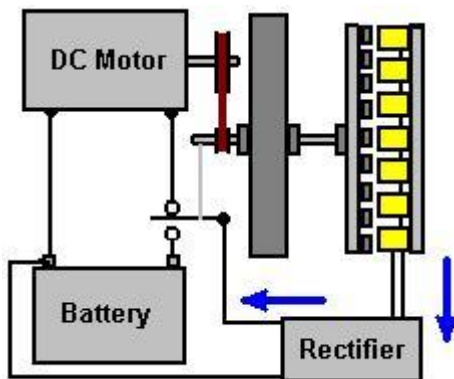
Pulse Motor Design

Addition of Pulsed Rotation

Bedini Motor Discussion from Patrick Kelly



Improvement suggested by Patrick Kelly:
Use belts or chain to gear the flywheel
Output to drive the DC Motor.



Tseung suggestion: use an **unbalanced** flywheel. To provide additional pulsing to bring-in more gravitational and Electromagnetic energy.

The Better Arrangement is to have rotating Magnets surrounded by Coils as in Tong Wheel.

225 HP Pulse Motor from USA funded by **Hong Kong** in 2000 (Military Secret?)

<http://www.youtube.com/watch?v=ArX7BDY1XRM>



Outer Electromagnets

外磁線圈

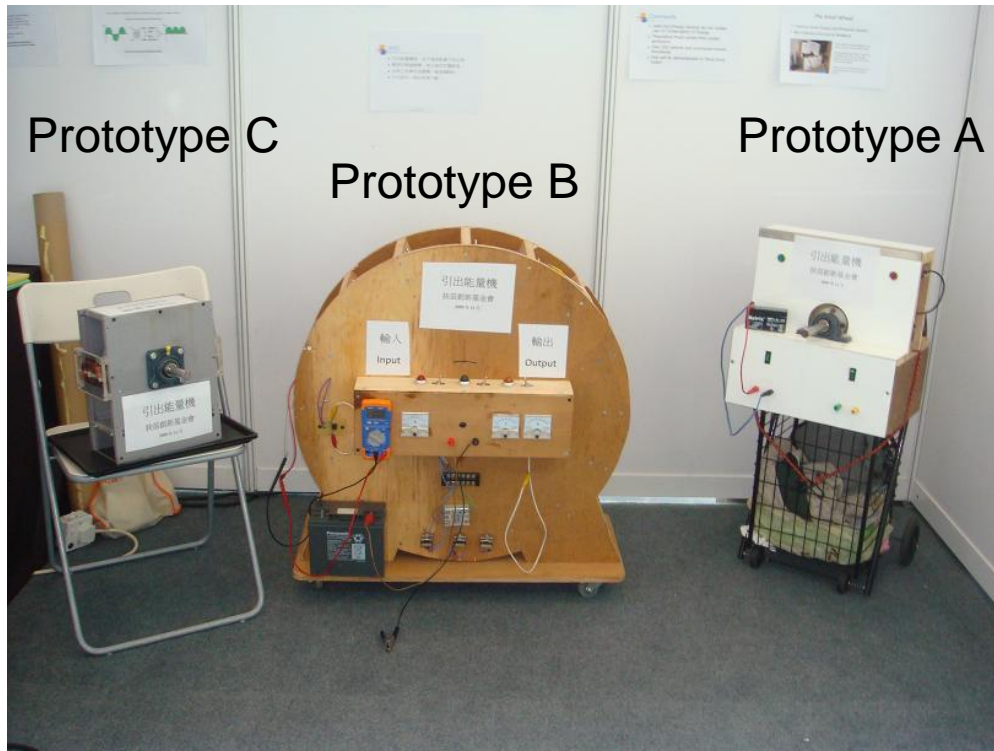
內磁石

Inner Rotating
Permanent Magnets

USA inventor did not get investment from USA. Funded by Andrew Wong!
Theory explained by Lee and Tseung at Tsinghua University in 2006.

Tong Wheel

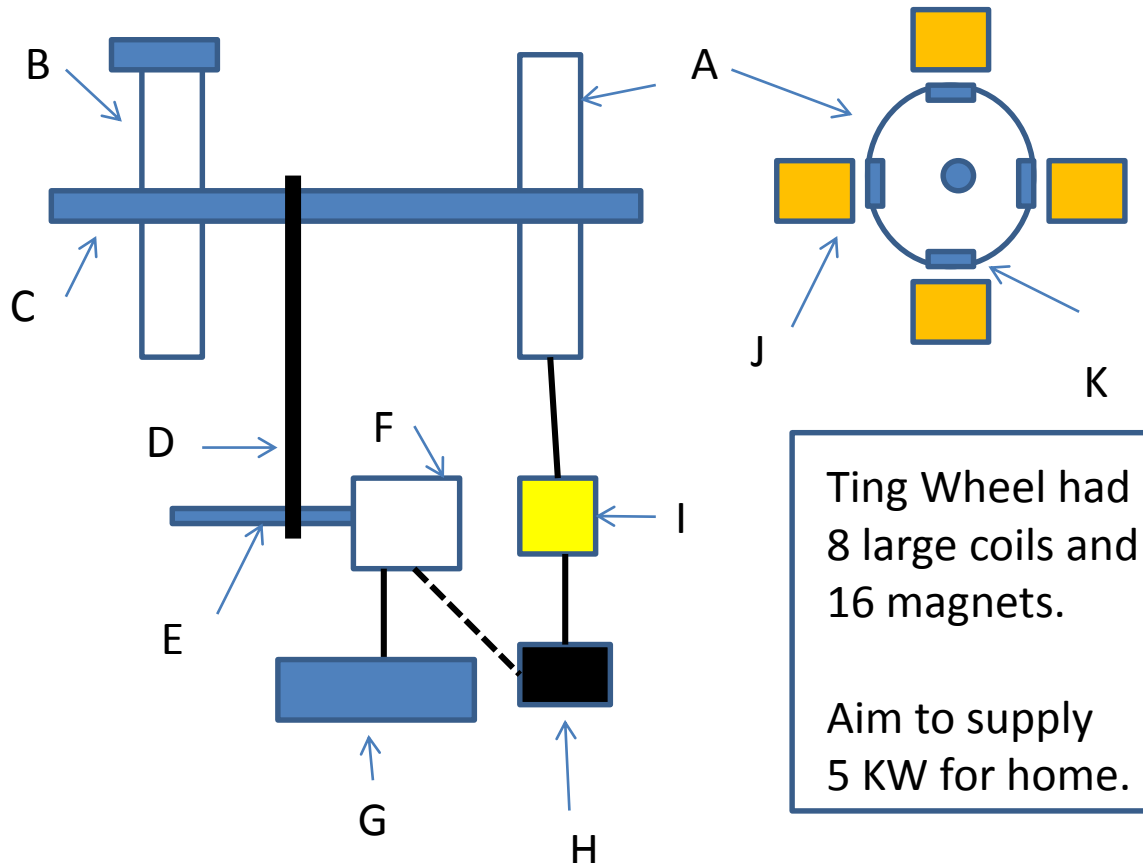
- <http://www.youtube.com/watch?v=BBRCs6sWjQw&list=UUCzf8o1PPM8ozwNgWyk5IHw>



- Tong Wheel prototype B had:
1. 16 magnets in rotation
 2. 15 Coils that can be drive or collectors
 3. Proximity switch used to control pulsing.
 4. Tuning via number and positioning of drive and collector coils.
 5. Adjust position and angle of proximity switch
 6. COP > 1 in Nov 2009?

Ting Wheel

- Aim for maximum output power.



Ting Wheel had
8 large coils and
16 magnets.

Aim to supply
5 KW for home.

- A Pulse Wheel
- B Unbalanced Wheel
- C Main shaft
- D Chain
- E Shaft for F
- F Commercial Windmill Generator
- G Electrical appliance fan, lights etc.
- H 12V Battery **recharged** by F
- I Pulse Circuit supply current for Coil J
- J Large Coil to provide Pulse and Magnetic Field.
- K Magnet

One Potential Product from WITTS

- Self running [40KW generator](#) from WITTS
 - [World Improvement Through The Spirit Ministries](#)



Self Running 40kW 40,000 Watt Fuelless Generator Full Video

The Quantum Energy Generator

- The QEG from Fixtheworldproject.org is based on the WITTS technology.
- QEG achieved resonance/overunity in Taiwan in Apr 2014 and many Countries afterwards.
- The Blueprints are free for download and training courses are available.
- Fixtheworldproject.org is a family organization without manufacturing capabilities.
- Prototype is for engineers to develop further.

Principle of the QEG

- Tank circuit (LC) to achieve resonance
- L in large Coil in core; C from capacitors
- Core has no permanent magnets
- Rotating axle driven by external motor and has laminated part to “connect” magnetic flux
- When driven at 400 hertz, resonance occurs
- Has not achieved the WITTS device in power and self loop as in Nov 2014

Review of Lee-Tseung Lead Out Energy Theory

1. Pull pendulum horizontally.
2. Tension of string increases.
3. Horizontal component of tension opposes Pull.
4. Vertical component of tension **raises** pendulum.
5. Work is done and **Gravitational Energy is brought** into the system.
6. For small angles, 2 parts horizontal energy leads out 1 part of vertical (gravitational) Energy.
7. Unbalanced Wheel acts like pendulum.

Lead out Gravitational Energy from Milkovic 2 Stage Penulum

1. At stationary position, **anti-clockwise moment** of Weight W_1 is **greater**.
2. During pendulum swing, Centrifugal force greatest at maximum swing velocity. This and the weight of the Bob can produce **higher clockwise moment**.
3. **Weight W_1 is lifted**. Gravitational energy is brought in the system.
4. Amplitude of pendulum swing **does not decrease**.
 - Energy is brought in and not transferred.
5. Many **looked** at video but did not **see**.

Lead out Energy via torque such as F.M.Chalkalis Energy Multiplier

1. Motor A (Pulse Motor preferred) rotates an Unbalanced Wheel.
2. Unbalanced Wheel brings in gravitational, magnetic or electromagnetic energy.
3. Energy is extracted via increased torque.
4. May use chain or belt to drive Generator/Motor B.
5. Motor B is more powerful than Motor A.
6. Possible for Motor B to supply energy to Motor A and provide more energy. (e.g. Ting)

Lead out gravitational energy in Bessler and Yuen Wheel

1. Unbalanced Wheel A brings in gravitational energy via “**jumping**”, producing torque on axle.
2. The energy is passed via the axle to rotate itself and Unbalanced Wheel B.
3. Unbalanced Wheel B does the same.
4. **Large diameter** or multiple wheels will enhance performance. (easier to maintain resonance)
5. Yuen Wheel deliberately discloses all details for the World to replicate and improve.

Completing the Lee-Tseung Lead out energy Theory

- The electromagnetic energy is essentially the **Electron Cloud** Energy.
- **Chemical Energy** is a form of Electron Cloud Energy. Different compounds of **same elements** have **different** Electron Clouds.
- Electron Cloud energy can be **exchanged** in form of electromagnetic waves or exist in different shapes.
- **No violation** of the Law of Conservation of Energy.
- **Abundant, Free, Easy to Access and Non-Polluting** Energy for the World.

Summary

- Gravitational energy can be lead-out or brought-in. So can magnetic or electromagnetic energy.
- Many “free energy” researchers are using lead-out energy without stating it.
- Road block of “violating Law of Conservation of Energy” removed.
- Knowledge to be shared (Divine Wine?)

Recommendations from Lawrence Tseung (1)

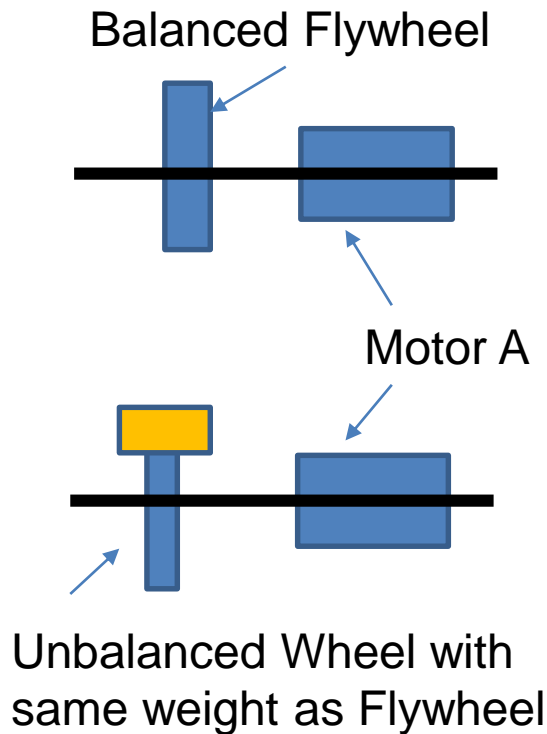
- Check out the Lead-out energy theory more.
- Approach **WITTS** as they have the most mature prototype.
- Get more information from overunity.com.
- Get Patrick Kelly's Free Energy ebook.
- Build the Tsinghua Energy Multiplier in Hong Kong
 - Oscilloscopes to check waveform and power
 - Self Loop or complete recharging of battery

Recommendations from Lawrence Tseung (2)

- Both USA and China Governments know the 225 HP Pulse Motor
 - Keeping it as top secret?
- Tseung will publish his knowledge on Internet
 - Do not want to carry to his grave
 - Treat as Divine Revelation to be shared
 - Have monthly open meetings in Tai Po
- Benefit the World with new paradigm...

Experiment to be done?

- If a rotating Unbalanced Wheel can lead-out gravitational energy, can it be demonstrated?



The top and bottom pictures show the Comparison.

Top is any conventional motor driving a flywheel. The Input energy, output energy and torque can be measured.

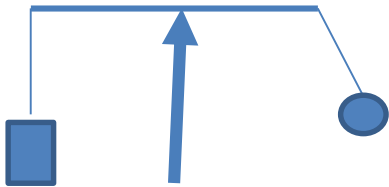
Bottom is the same motor driving an Unbalanced Wheel.

Does that look like the Peru or Chas Campbell set up?

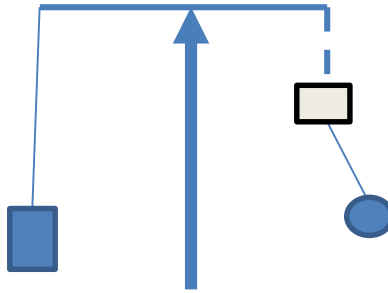
Adjust the motor speed to get “resonance”...

Experiment to be done?

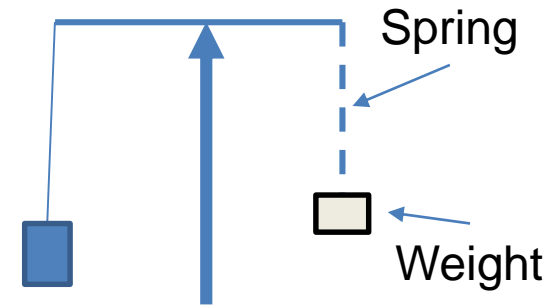
- Vertical oscillation leading-out gravitational energy?



a. Milkovic 2SO
lead-out
energy



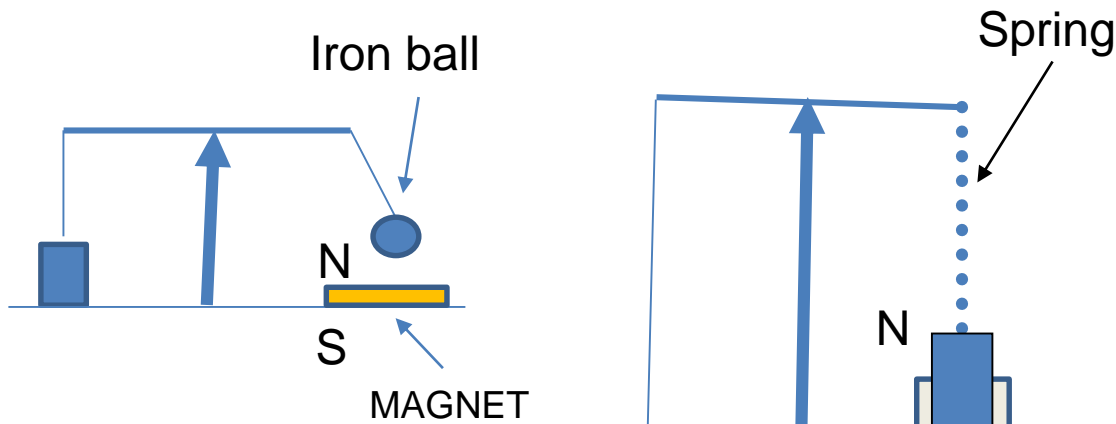
b. A Spring with
Weight added to
Pendulum.
Expect to lead-out
Gravitational Energy.



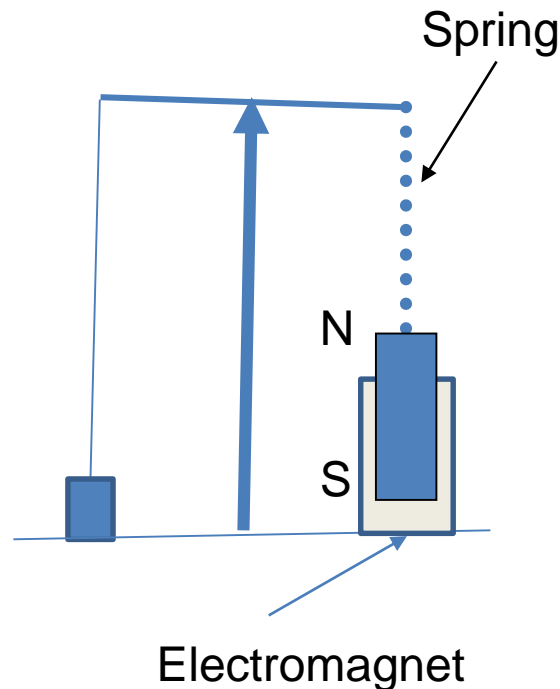
c. Oscillating Weight on
Spring. Will it lead-out
energy?
Weight “jumping”?
Vertical oscillation...

Experiment to be done?

- Leading-out gravitational + Magnetic or electromagnetic energy?



a. Iron Ball and Magnet increase g effectively.

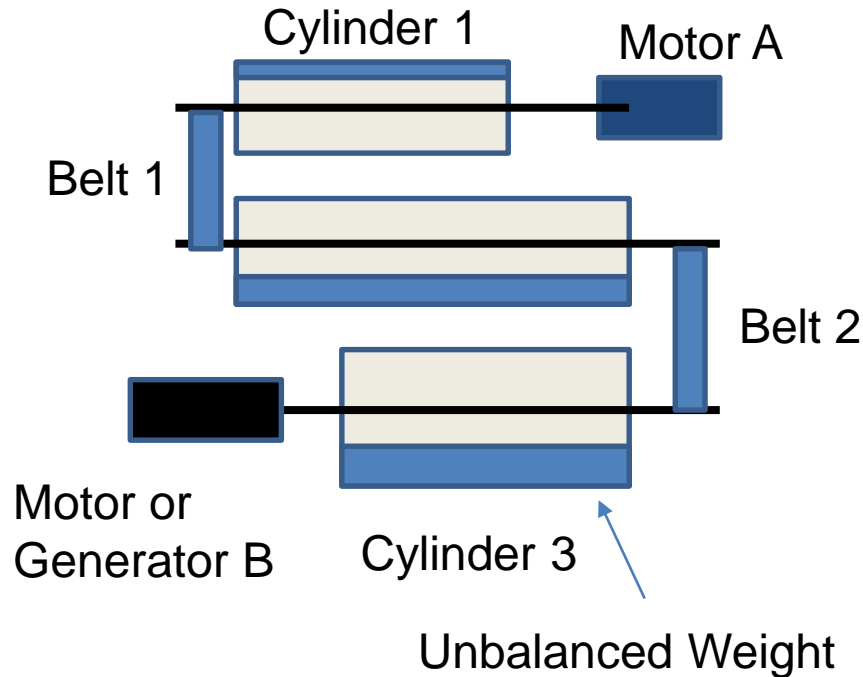


The Electromagnet attracts when Bob swings down (or Magnet goes down) and repels when Bob swings up (or Magnet goes up).

Would that be more efficient in bringing-in electromagnetic energy?

Experiment to be done

- The Tsinghua University Energy Multiplier secret?



Motor A can drive a more Powerful Generator/Motor B.

Secret:

Three sets of cylinders with Unbalanced Weight Connected via belts. Higher torque is a given.

Gravitational energy is Brought-in???

Better than Chas Campbell?

Factors affecting the leading-out of Gravitational Energy

- From the Milkovic 2SO or the Skinner Device, an important factor is Centrifugal Force.
- The formula is:
- $F = M * V * V / R$ or $F = M * W * W * R$ where
 - F=Force, M=Mass, V=Velocity, R=Radius, W=Angular Velocity.
 - Double the Angular Velocity, the Force increases 4 times.
- Lead-out energy is proportional to F
- Tsinghua and other Energy Multipliers are more efficient at higher rotational speeds!

The Lead-out Energy formula

- From the Law of Conservation of Energy
 - $E_{in} + E_{gravity} = E_{loss} + E_{out}$ or
 - $E_{out} = E_{in} + (E_{gravity} - E_{loss})$
- So long as the lead-out gravitational energy $E_{gravity}$ is greater than E_{loss} , $E_{out} > E_{in}$
- This is the result of the Lee-Tseung theory.
- No violating Law of Conservation of energy.
- **$E_{gravity}$ can be increased via mass, radius or angular velocity (rotational speed).**

God Bless

- Lee Cheung Kin and Lawrence Tseung first developed and presented the Lead-out theory in 2004.
- They wanted fame and fortune at that time.
 - No success
- Now they just want to benefit the World.
 - Do they have success?
- **Divine Wine is for all to share...**